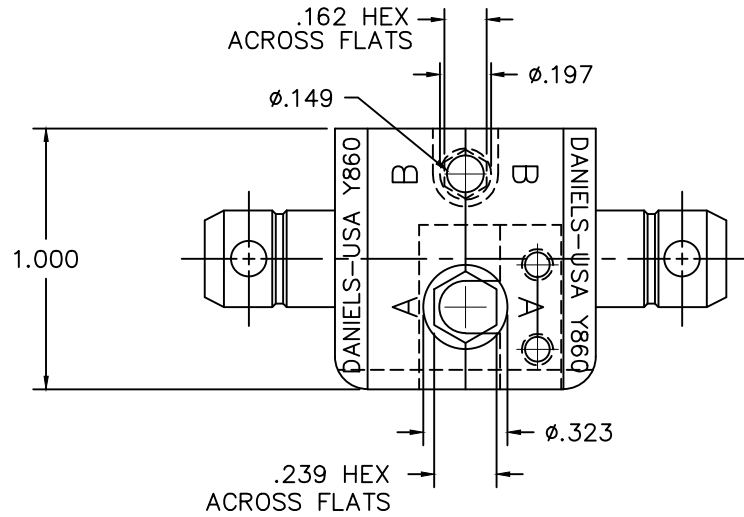
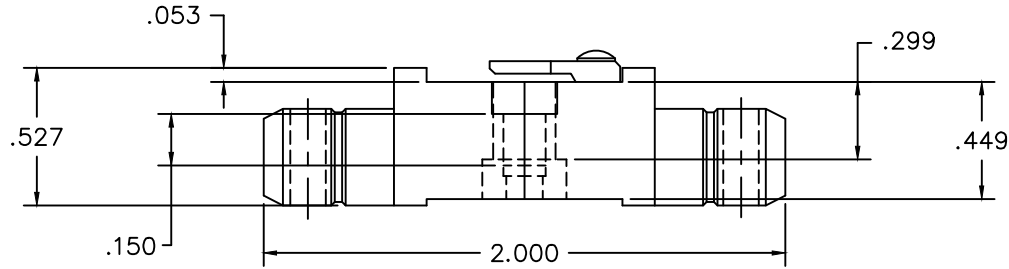


USERS MUST ENSURE CORRECT REVISION



REVISIONS				
REV. SYM.	E.C.O. NUMBER	DESCRIPTION	BY DATE	APP'D DATE
1		ORIGINAL RELEASE	J. STRAITON 2-27-92	PD 3-16-92
2		REVISED DIAMETERS CHG'D LOCATOR TO OPPOSITE SIDE	JWU 4-21-00	RRR 4-21-00

RESTRICTED & CONFIDENTIAL

CONFIDENTIAL PROPERTY OF DANIELS MANUFACTURING CORP. NOT TO BE DISCLOSED TO OTHERS, REPRODUCED OR USED FOR ANY OTHER PURPOSE, EXCEPT AS AUTHORIZED IN WRITING BY DANIELS MANUFACTURING. MUST BE RETURNED TO DANIELS MANUFACTURING CORP. ON COMPLETION OF ORDER OR OTHER PURPOSE FOR WHICH LENT.

DO NOT SCALE DRAWING

MATERIAL

HEAT TREAT

FINISH

ITEM	PART NO.	QTY.	DESCRIPTION/REMARKS
DRN.	J. STRAITON	DATE	2-27-92
CHK'D.	PD	DATE	3-4-92
APP'D.	DD	DATE	3-5-92
APP'D.		DATE	
<p>NOTE: THIS DRAWING IS AN OUTLINE DRAWING OF THE RESPECTIVE DMC PART NUMBER INDICATED. ACTUAL DMC PART NUMBER IS DRAWING NUMBER WITHOUT THE "-ENV" SUFFIX.</p>			
<p>TITLE DIE SET ENVELOPE DRAWING</p>			
<p>WHERE USED:</p>			
SIZE	SCALE	CAD P/N	SHEET OF
B	2X	Y860-ENV	1 1
POSTING	DWG. NO.	Y860-ENV	REV. 2

**DMC** DANIELS MANUFACTURING CORP.  
ORLANDO, FLORIDA  
CAGE 11851

1. FUNCTIONAL EQUIVALENT TO HYPERTAC HTA 206 (HTA 265 WITHOUT LOCATOR) .

NOTES: