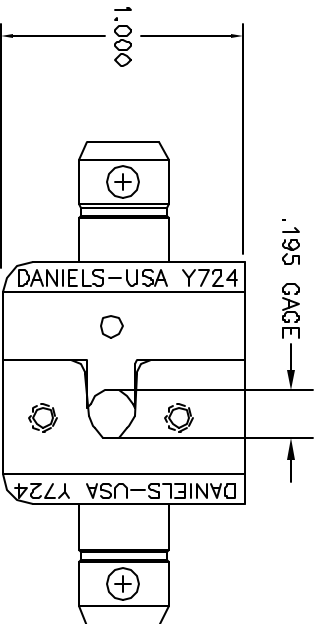
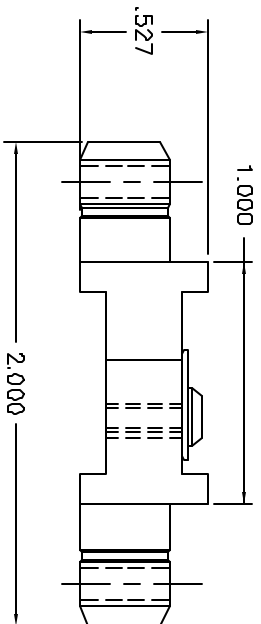


REV.	EQLE NUMBER	DESCRIPTION	BY DATE	APP'D DATE
1		ORIGINAL RELEASE	8/12/04	8/12/04



**UNCONTROLLED DOCUMENT
WILL NOT BE UPDATED**

1. AMP EQUIVALENT: 45064-3.
NOTES:

RESTRICTED & CONFIDENTIAL		RESTRICTED & CONFIDENTIAL	
MANUFACTURING EQUIPMENT NOT TO BE REPRODUCED OR USED FOR ANY PURPOSE EXCEPT AS AUTHORIZED IN WRITING BY DANIELS MANUFACTURING. MUST BE RETURNED TO DANIELS MANUFACTURING CORP. IN COMPLETE OR ASBESTOS FREE CONDITION WITHIN 10 DAYS.		MANUFACTURING EQUIPMENT NOT TO BE REPRODUCED OR USED FOR ANY PURPOSE EXCEPT AS AUTHORIZED IN WRITING BY DANIELS MANUFACTURING. MUST BE RETURNED TO DANIELS MANUFACTURING CORP. IN COMPLETE OR ASBESTOS FREE CONDITION WITHIN 10 DAYS.	
DO NOT SCALE DRAWING		DO NOT SCALE DRAWING	
MATERIAL		MATERIAL	
HEAT TREAT		HEAT TREAT	
FINISH		FINISH	
ITEM		PART NO.	
DRN. J. JOYCE		DATE 8/12/04	
CH'D. RRR		DATE 8/12/04	
AP'D. DATE		DATE	
AP'D. DATE		DATE	
NOTE:		NOTE:	
THIS DRAWING IS AN OUTLINE		DRAWING OF THE RESPECTIVE	
INDICATED BY ACTUAL DIMS		PART NUMBER WITHIN	
THE "ENV" SUFFIX		THE "ENV" SUFFIX	
WHERE USED		SCALE	
B		2X	
POSITIVE		TOD P/N	
Y724-ENV		SHEET 1 OF 1	
Y724-ENV		REV 1	
DIE SET		DESCRIPTION/REMARKS	
ENVELOPE DRAWING		DANIELS MANUFACTURING CORP.	
ENVELOPE DRAWING		ORLANDO, FLORIDA	
ENVELOPE DRAWING		CASE 11851	