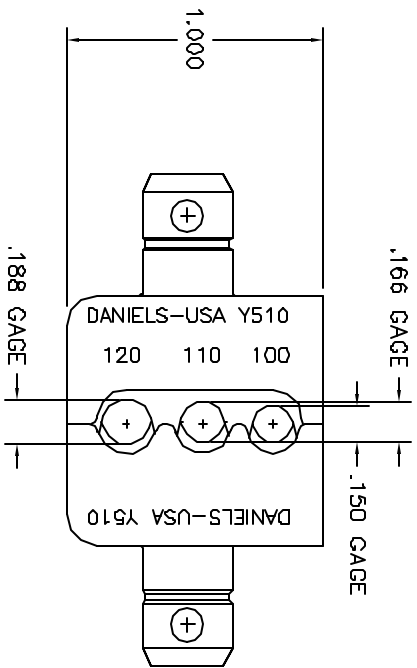
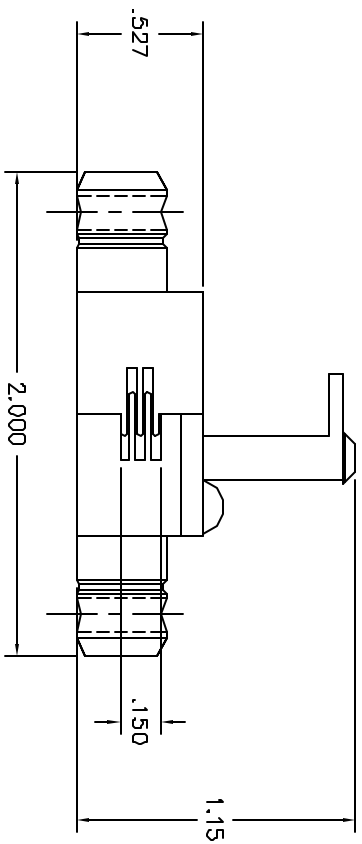


REVISIONS				
REV. NUMBER	ECNO. NUMBER	DESCRIPTION	BY DATE	APPR. DATE
1		ORIGINAL RELEASE	1/20/98	3/20/98



**UNCONTROLLED DOCUMENT
WILL NOT BE UPDATED**

RESTRICTED & CONFIDENTIAL		MATERIAL		ITEM		PART NO.		QTY.		DESCRIPTION/REMARKS	
CONFIDENTIAL PROPERTY OF DANIELS MANUFACTURING CORP. NOT TO BE REPRODUCED OR TRANSMITTED IN ANY FORM OR BY ANY MEANS, ELECTRONIC OR MECHANICAL, INCLUDING PHOTOCOPYING, RECORDING, OR BY ANY INFORMATION STORAGE AND RETRIEVAL SYSTEM, WITHOUT THE WRITTEN PERMISSION OF DANIELS MANUFACTURING CORP. WHICH LEHNS.		HEAT TREAT		ITEM	DATE	DATE	DATE	DATE	DATE	DATE	DATE
		FINISH		DRN	JS	5/17/98	CHK'D	MS	5/20/98	APPR.	AM
DO NOT SCALE DRAWING				THIS DRAWING IS AN OUTLINE DRAWING OF THE RESERVE DIE AND PART NUMBER INDICATED. ACTUAL DIMENSIONS AND PART NUMBER WITHOUT THE "ENV" SUFFIX.		DMC DANIELS MANUFACTURING CORP. ORLANDO, FLORIDA CASE 11851		WHERE USED: SIZE SCALE B 2X PLOTTING		CAD P/N Y510-ENV DWS NO. Y510-ENV	
				NOTE: DRAWING OF THE RESERVE DIE AND PART NUMBER INDICATED. ACTUAL DIMENSIONS AND PART NUMBER WITHOUT THE "ENV" SUFFIX.		TITLE: DIE SET ENVELOPE DRAWING		SHEET 1 OF 1 REV. 1			