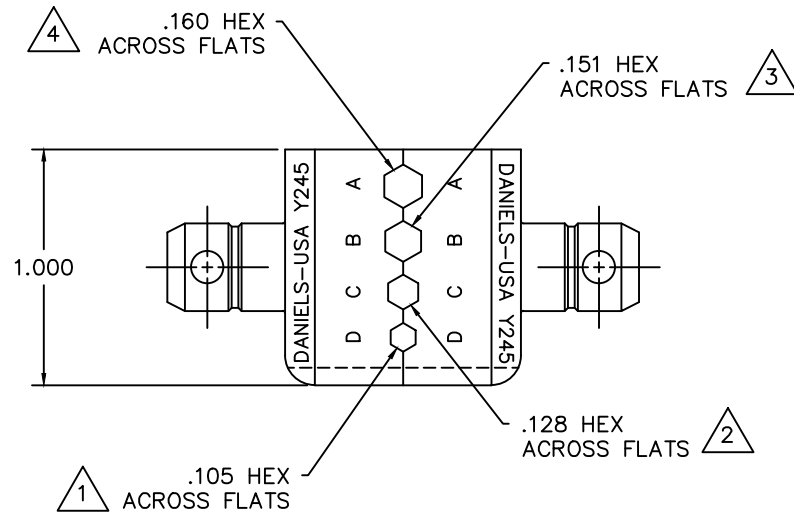
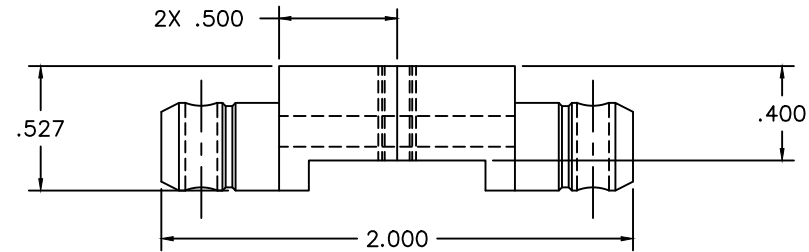



REVISIONS				
REV. SYM.	E.C.O. NUMBER	DESCRIPTION	BY DATE	APP'D DATE
2		REVISED GAGES	ENF 2-13-15	RRR 2-13-15



**UNCONTROLLED DOCUMENT  
WILL NOT BE UPDATED**

4. USE GAGE G1223.
3. USE GAGE G1246.
2. USE GAGE G1227.
1. USE GAGE G1228.

NOTES:

<b>RESTRICTED &amp; CONFIDENTIAL</b> CONFIDENTIAL PROPERTY OF DANIELS MANUFACTURING CORP. NOT TO BE DISCLOSED TO OTHERS, REPRODUCED OR USED FOR ANY OTHER PURPOSE, EXCEPT AS AUTHORIZED IN WRITING BY DANIELS MANUFACTURING. MUST BE RETURNED TO DANIELS MANUFACTURING CORP. ON COMPLETION OF ORDER OR OTHER PURPOSE FOR WHICH LENT.	MATERIAL	ITEM	PART NO.	QTY.	DESCRIPTION/REMARKS	
	HEAT TREAT	DRN.	D.DEPAIVA	DATE	9/9/97	
	FINISH	CHK'D.	DE	DATE	9/97	 <b>DANIELS MANUFACTURING CORP.</b> ORLANDO, FLORIDA CAGE 11851
		NOTE:	APPR'D.	DATE	TITLE	
DO NOT SCALE DRAWING		THIS DRAWING IS AN OUTLINE DRAWING OF THE RESPECTIVE DMC PART NUMBER INDICATED. ACTUAL DMC PART NUMBER IS DRAWING NUMBER WITHOUT THE "-ENV" SUFFIX.		WHERE USED:	SIZE B SCALE 2X CAD P/N Y245-ENV SHEET 1 OF 1 POSTING DWG. NO. Y245-ENV REV. 2	