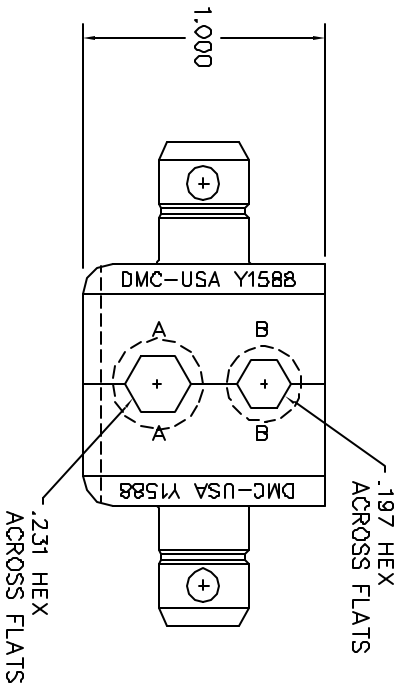
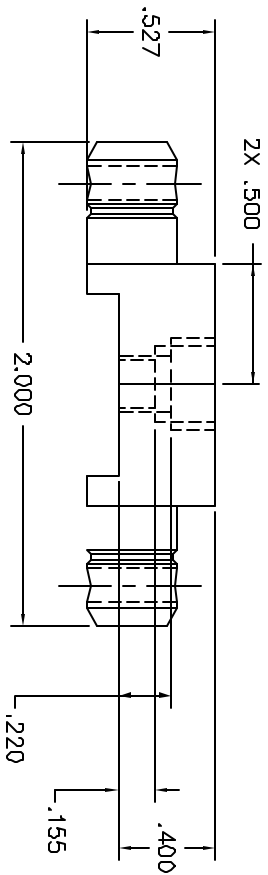


| REVISIONS | | | | |
|-----------|-------------|------------------|----------|------------|
| REV. | EQD. NUMBER | DESCRIPTION | BY DATE | APPR. DATE |
| 1 | | ORIGINAL RELEASE | 12/29/88 | 12/29/88 |



**UNCONTROLLED DOCUMENT
WILL NOT BE UPDATED**

| RESTRICTED & CONFIDENTIAL | | MATERIAL | | ITEM | | PART NO. | | QTY. | | DESCRIPTION/REMARKS | |
|--|--|------------|--|---|--|---------------------|--|----------------------|--|--|--|
| CONFIDENTIAL PROPERTY OF DANIELS MANUFACTURING CORP. NOT TO BE REPRODUCED OR TRANSMITTED IN ANY FORM OR BY ANY MEANS, ELECTRONIC OR MECHANICAL, INCLUDING PHOTOCOPYING, RECORDING, OR BY ANY INFORMATION STORAGE AND RETRIEVAL SYSTEM, WITHOUT THE WRITTEN PERMISSION OF DANIELS MANUFACTURING CORP. | | HEAT TREAT | | DIN J. JOYCE | | 12/29/88 | | | | DMC DANIELS MANUFACTURING CORP. ORLANDO, FLORIDA CASE 11851 | |
| | | FINISH | | RRR | | 12/29/88 | | | | | |
| DO NOT SCALE DRAWING | | | | THIS DRAWING IS AN OUTLINE DRAWING OF THE REFERRED DIE PART NUMBER AND INDICATES ACTUAL DIMENSIONS WITHOUT THE ".ENV" SUFFIX. | | NOTE: WHERE USED | | CAD P/N Y1588-ENV | | SHEET 1 OF 1 REV 1 | |