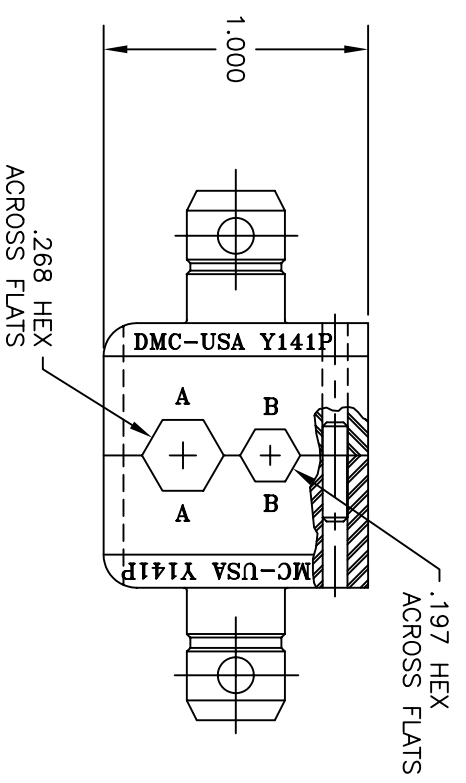
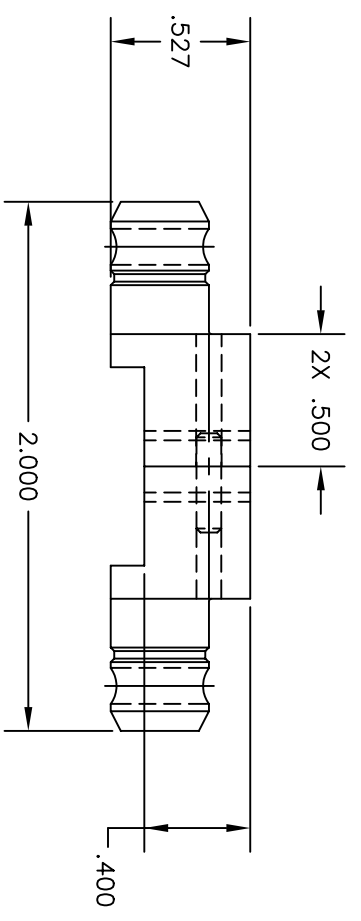


REVISIONS				
REV. SYM.	E.C.O. NUMBER	DESCRIPTION	BY DATE	APP'D DATE
1		ORIGINAL RELEASE	JMM 6/3/99	RRR 6/3/99



**UNCONTROLLED DOCUMENT
WILL NOT BE UPDATED**

RESTRICTED & CONFIDENTIAL		CONFERENTIAL PROPERTY OF DANIELS MANUFACTURING CORP. NOT TO BE DISCLOSED TO OTHERS, REPRODUCED OR USED FOR ANY OTHER PURPOSE, EXCEPT AS AUTHORIZED IN WRITING BY DANIELS MANUFACTURING. MUST BE RETURNED TO DANIELS MANUFACTURING CORP. ON COMPLETION OF ORDER OR OTHER PURPOSE FOR WHICH Lent.	
MATERIAL		HEAT TREAT	
FINISH			
ITEM	PART NO.	QTY.	DESCRIPTION/REMARKS
DRN. J. JOYCE	DATE 6/3/99		
CHK'D. RRR	DATE 6/3/99		
APP'D.	DATE		
APP'D.	DATE		
NOTE: THIS DRAWING IS AN OUTLINE DRAWING OF THE RESPECTIVE DMC PART NUMBER INDICATED. ACTUAL DMC PART NUMBER IS DRAWING NUMBER WITHOUT THE -ENV SUFFIX.			
WHERE USED:		CAD P/N	
SIZE	SCALE	Y141P-ENV	SHEET 1 OF 1
B	2X	Y141P-ENV	REV. 1
POSTING	DWG. NO.	Y141P-ENV	
DMC DANIELS MANUFACTURING CORP. ORLANDO, FLORIDA CASE 11851			
TITLE DIE SET ENVELOPE DRAWING			
DO NOT SCALE DRAWING			