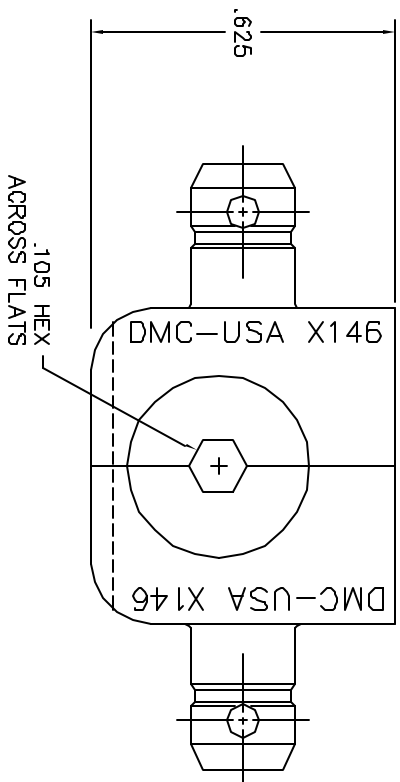
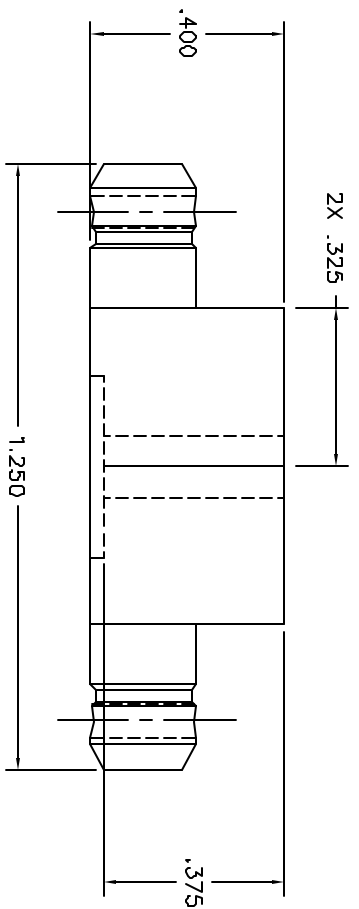


REV.	DATE	DESCRIPTION	BY	DATE	APP'D	DATE
1	12/29/88	ORIGINAL RELEASE	JMM	12/29/88		12/29/88



**UNCONTROLLED DOCUMENT
WILL NOT BE UPDATED**

RESTRICTED & CONFIDENTIAL		CONFIDENTIAL PROPERTY OF DANIELS MANUFACTURING CORP. NOT TO BE REPRODUCED OR COPIED IN ANY MANNER EXCEPT AS AUTHORIZED IN WRITING BY DANIELS MANUFACTURING. MUST BE RETURNED TO DANIELS MANUFACTURING CORP. ON COMPLETION OF ORDER WHICH ISSUED FOR WHICH INTENT.	
MATERIAL		FINISH	
HEAT TREAT		FINISH	
ITEM	PART NO.	QTY.	DESCRIPTION /REMARKS
DRW. J. JOYCE	DATE 12/29/88		
CHKD. RRR	DATE 12/29/88		
APP'D.	DATE		
NOTE: THIS DRAWING IS AN EXHIBIT DRAWING OF THE REFERENCED DIE PART NUMBER. ACTUAL DIE PART NUMBER IS INDICATED IN THE "-ENV" SUFFIX.			
WEIGHT USED		DIE SET	
SIZE	SCALE	DWG P/A	SHEET 1 OF 1
B	NTS	X146-ENV	REV 1
POSTING	DWG. NO.	X146-ENV	REV 1

DO NOT SCALE DRAWING