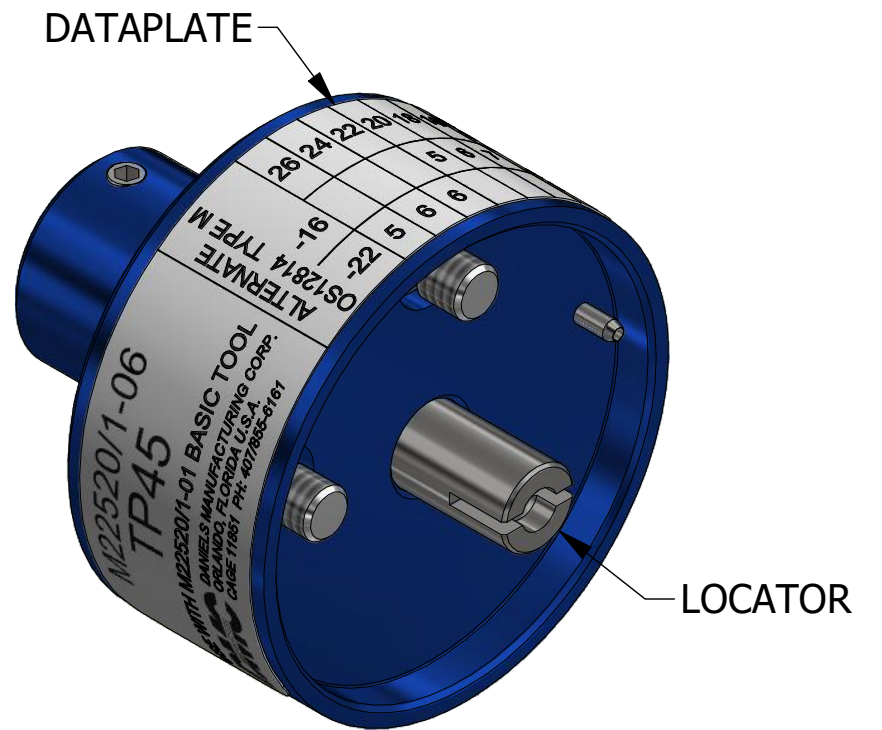
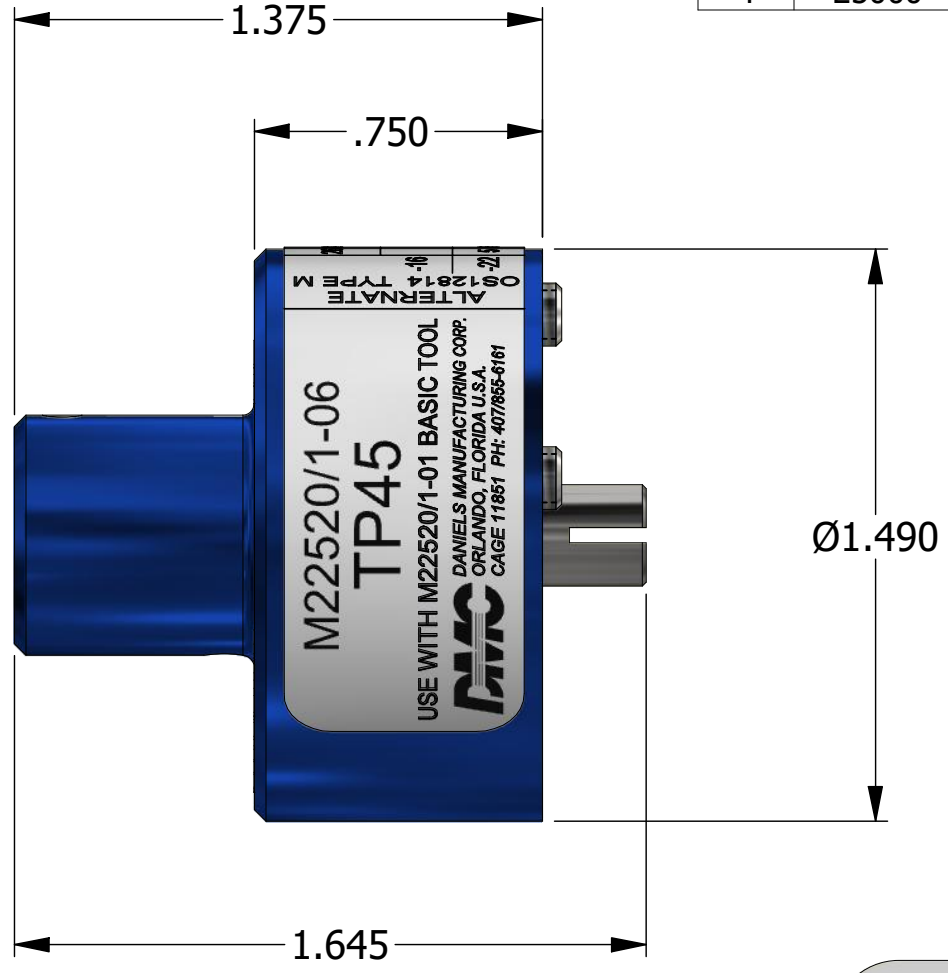


REVISIONS						
REV	ECO NO.	DESCRIPTION	BY	DATE	APP'D BY	DATE
2		REDRAWN	DH	4/12/1988	TS	4/12/1988
3	23573	UPDATED & REDRAWN	TonyD	2/24/2015		
4	25000	DATAPLATE UPDATED	TonyD	7/22/2020		



LOCATOR	
HOLE DIMENSIONS	ADDITIONAL FEATURES
Ø.129 ▽.070	.040 SLOT ▽.200

M22520/1-06 TP45		ALTERNATE OS12814 TYPE M						WIRE SIZE
USE WITH M22520/1-01 BASIC TOOL		-16						
DANIELS MANUFACTURING CORP. ORLANDO, FLORIDA U.S.A. CAGE 11851 PH: 407/855-6161		-22	5	6	6			
								SEL No.

DATAPLATE

**UNCONTROLLED DOCUMENT
WILL NOT BE UPDATED**
DIMENSIONS IN INCHES - UNLESS OTHERWISE SPECIFIED

RESTRICTED & CONFIDENTIAL
CONFIDENTIAL PROPERTY OF DANIELS MANUFACTURING CORP. NOT TO BE DISCLOSED TO OTHERS. REPRODUCTION OR USED FOR ANY OTHER PURPOSE EXCEPT AS AUTHORIZED IN WRITING BY DANIELS MANUFACTURING. MUST BE RETURNED TO DANIELS MANUFACTURING CORP. ON COMPLETION OF ORDER OR PURPOSES FOR WHICH LENT.

CREATED FROM AN INVENTOR MODEL.
CHANGES MUST BE REFLECTED IN THE 3D PART

DO NOT SCALE DRAWING

MATERIAL	ITEM	PART NO.	QTY.	DESCRIPTION / REMARKS
N/A	DRN. DH CHK'D.	DATE 4/12/1988 DATE		DANIELS MANUFACTURING CORP. ORLANDO, FLORIDA CAGE 11851
HEAT TREAT				NOTE: THIS DRAWING IS AN OUTLINE DRAWING OF THE RESPECTIVE DMC PART NUMBER INDICATED. ACTUAL DMC PART NUMBER IS CAD PART NUMBER WITHOUT THE "-ENV" SUFFIX
FINISH				TITLE: SINGLE POSITION HEAD (M22520/1-06) ENVELOPE DRAWING WHERE USED: AF8
N/A				SIZE: B SCALE: 2:1 CAD P/N: TP45-ENV SHEET: 1 OF 1 DWG. NO. TP45 REV. 4