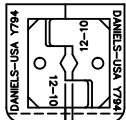
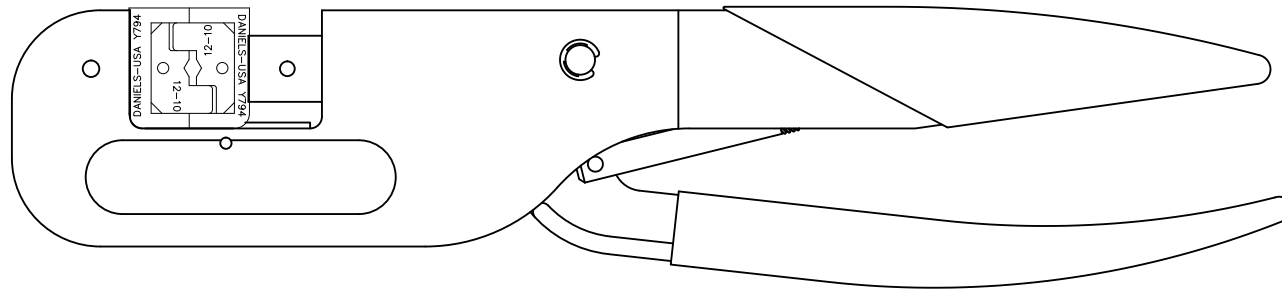
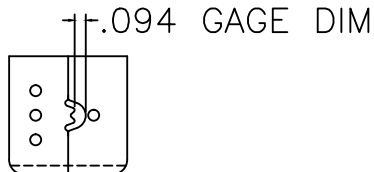


| REVISIONS | | | | |
|-----------|---------------|------------------|--------------|--------------|
| REV. SYM. | E.C.O. NUMBER | DESCRIPTION | BY DATE | APP'D DATE |
| 1 | | ORIGINAL RELEASE | ENF 10/26/10 | RRR 10/26/10 |



.102 GAGE DIM




.094 GAGE DIM

**UNCONTROLLED DOCUMENT
WILL NOT BE UPDATED**

1. FUNCTIONAL EQUIV TO AMP 59461.

NOTES:

| | | | | | | | | |
|---|--|------------|--|---|-------------|---------------|---|----|
| RESTRICTED & CONFIDENTIAL | | MATERIAL | | ITEM | PART NO. | QTY. | DESCRIPTION/REMARKS | |
| CONFIDENTIAL PROPERTY OF DANIELS MANUFACTURING CORP. NOT TO BE DISCLOSED TO OTHERS, REPRODUCED OR USED FOR ANY OTHER PURPOSE, EXCEPT AS AUTHORIZED IN WRITING BY DANIELS MANUFACTURING. MUST BE RETURNED TO DANIELS MANUFACTURING CORP. ON COMPLETION OF ORDER OR OTHER PURPOSE FOR WHICH LENT. | | HEAT TREAT | | DRN. | ENF | DATE 10/26/10 |  DANIELS MANUFACTURING CORP. ORLANDO, FLORIDA CAGE 11851 | |
| | | | | CHK'D. | DE | DATE 10/26/10 | | |
| | | | | APP'D. | | DATE | | |
| | | | | APP'D. | | DATE | | |
| DO NOT SCALE DRAWING | | FINISH | | NOTE: | | | TITLE | |
| | | | | THIS DRAWING IS AN OUTLINE DRAWING OF THE RESPECTIVE DMC PART NUMBER INDICATED. ACTUAL DMC PART NUMBER IS DRAWING NUMBER WITHOUT THE "-ENV" SUFFIX. | | | WHERE USED: | |
| | | | | SIZE | SCALE | CAD P/N | SHEET | OF |
| | | | | B | FULL | HX4-794-ENV | 1 | 1 |
| | | | | POSTING | P/N | | REV. | |
| | | | | | HX4-794-ENV | | 1 | |