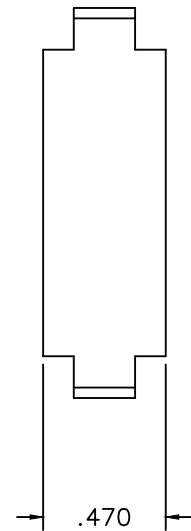


REVISIONS				
REV. SYM.	E.C.O. NUMBER	DESCRIPTION	BY DATE	APP'D DATE
D		REVISED GAGING	ENF 5-16-11	DE 5-16-11



- 2. USE GAGE G1155 TO CHECK
- 1. USED FOR SIZE 2/0 AWG NON-INSULATED TERMINALS.

**UNCONTROLLED DOCUMENT  
WILL NOT BE UPDATED**

<b>RESTRICTED &amp; CONFIDENTIAL</b> <small>CONFIDENTIAL PROPERTY OF DANIELS MANUFACTURING CORP. NOT TO BE DISCLOSED TO OTHERS, REPRODUCED OR USED FOR ANY OTHER PURPOSE, EXCEPT AS AUTHORIZED IN WRITING BY DANIELS MANUFACTURING. MUST BE RETURNED TO DANIELS MANUFACTURING CORP. ON COMPLETION OF ORDER OR OTHER PURPOSE FOR WHICH LENT.</small>	MATERIAL	ITEM	PART NO.	QTY.	DESCRIPTION/REMARKS	
	HEAT TREAT	DRN.	D.DEPAIVA	DATE	<b>DMC</b> DANIELS MANUFACTURING CORP. ORLANDO, FLORIDA CAGE 11851	
	FINISH	CHK'D.	DE	DATE		
	DO NOT SCALE DRAWING	NOTE: THIS DRAWING IS AN OUTLINE DRAWING OF THE RESPECTIVE DMC PART NUMBER INDICATED. ACTUAL DMC PART NUMBER IS DRAWING NUMBER WITHOUT THE "-ENV" SUFFIX.		APP'D.		DATE
		APP'D.	DATE	DOUBLE INDENT DIE SET ENVELOPE DRAWING SIZE #2/0 AWG		
		WHERE USED:	SIZE	SCALE	CAD P/N	
			B	2X	HD51-124N-ENV	
			POSTING	DWG. NO.	REV.	
				HD51-124N-ENV	D	
					SHEET 1 OF 1	