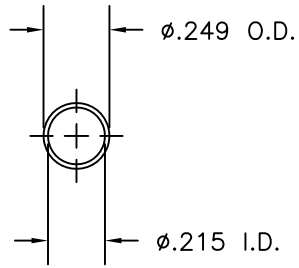
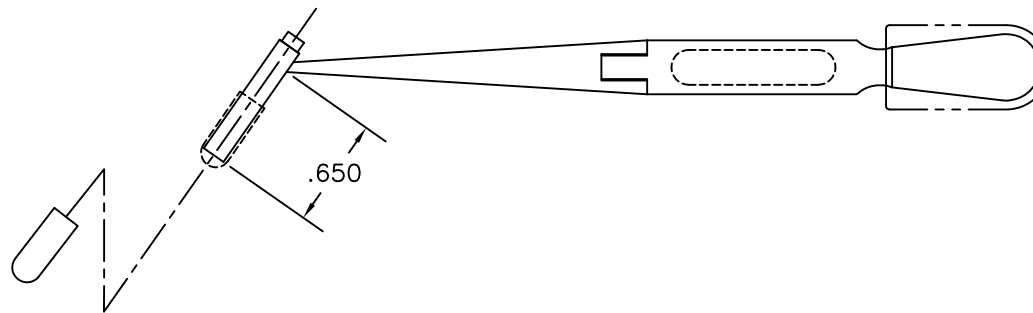
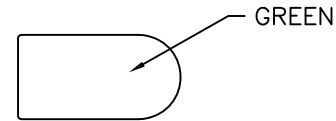
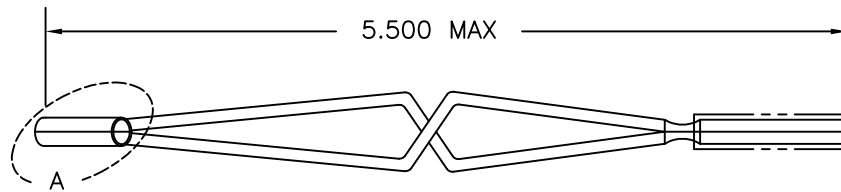


REVISIONS				
REV. SYM.	E.C.O. NUMBER	DESCRIPTION	BY DATE	APP'D DATE
1		ORIGINAL RELEASE	DUNG CAO 8-9-95	DE 8-95



VIEW A



**UNCONTROLLED DOCUMENT
WILL NOT BE UPDATED**

RESTRICTED & CONFIDENTIAL		MATERIAL		ITEM	PART NO.	QTY.	DESCRIPTION/REMARKS
CONFIDENTIAL PROPERTY OF DANIELS MANUFACTURING CORP. NOT TO BE DISCLOSED TO OTHERS, REPRODUCED OR USED FOR ANY OTHER PURPOSE, EXCEPT AS AUTHORIZED IN WRITING BY DANIELS MANUFACTURING. MUST BE RETURNED TO DANIELS MANUFACTURING CORP. ON COMPLETION OF ORDER OR OTHER PURPOSE FOR WHICH LENT.		HEAT TREAT		DRN.	DUNG CAO	DATE	8-18-95
				CHK'D.	DE	DATE	8-95
				APP'D.		DATE	
DO NOT SCALE DRAWING		FINISH		NOTE: THIS DRAWING IS AN OUTLINE DRAWING OF THE RESPECTIVE DMC PART NUMBER INDICATED. ACTUAL DMC PART NUMBER IS DRAWING NUMBER WITHOUT THE "-ENV" SUFFIX.			
				TITLE		WHERE USED:	
				SIZE	SCALE	CAD P/N	SHEET OF
				APP'D.		DATE	
				DMC DANIELS MANUFACTURING CORP. ORLANDO, FLORIDA CAGE 11851		INSTALLING TOOL ENVELOPE DRAWING (SERIES 1) (M81969/8B-11)	
				POSTING	DWG. NO.	REV.	
				B	NTS	DAK95-10B-ENV	1 1
				DAK95-10B-ENV		1	1