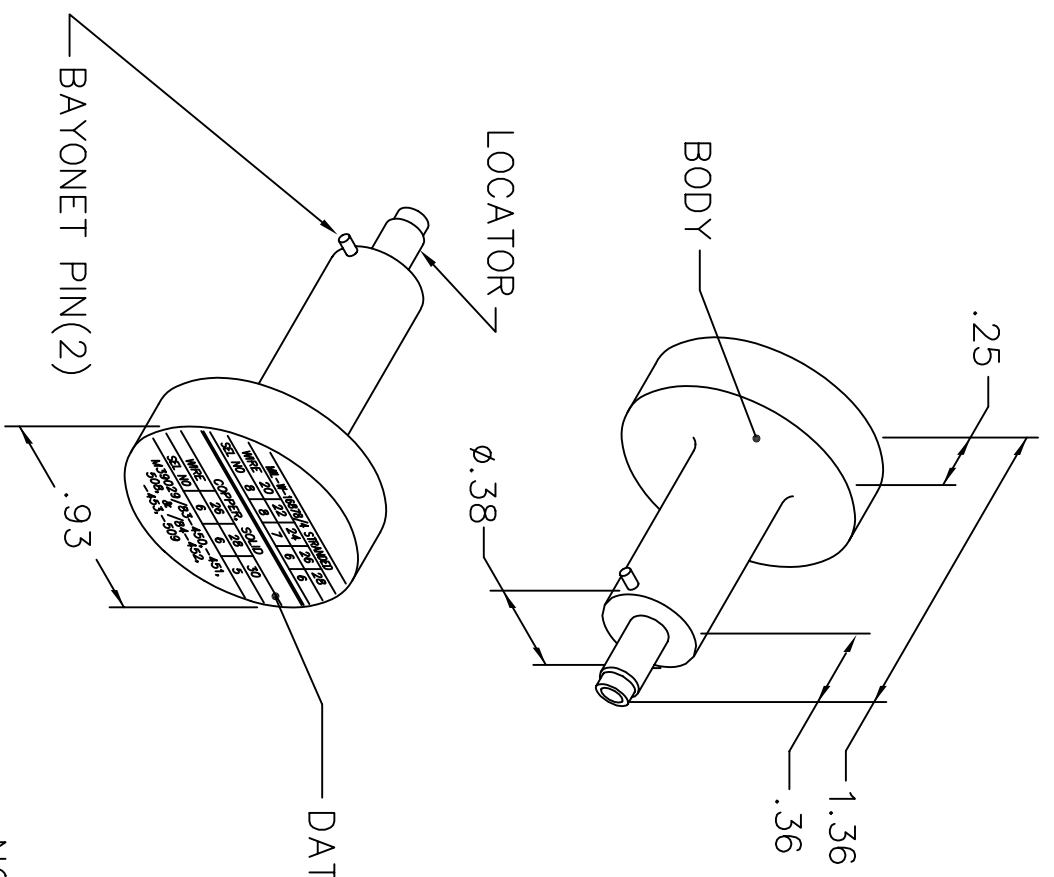


REVISIONS				
REV. SYM.	E.C.O. NUMBER	DESCRIPTION	BY DATE	APP'D DATE
2		REVISED DATAPLATE	AAM 9-8-97	DE 9-97

**UNCONTROLLED DOCUMENT
WILL NOT BE UPDATED**



MIL-W-16878/4 STRANDED					
WIRE	20	22	24	26	28
SEL NO	8	8	7	6	6
COPPER, SOLID					
WIRE	26	28	30		
SEL NO	6	6	5		
M39029/83-450,-451, -508, & /84-452, -453,-509					

NOTE: FOR USE WITH DANIELS CRIMP TOOL
P/N 39-000.

LOCATOR	
HOLE DIMENSIONS	ADDITIONAL FEATURES
∅.073 ∓ 1.17 MIN.	┌┐ ∅.093 ∓ .088

RESTRICTED & CONFIDENTIAL

CONFIDENTIAL PROPERTY OF DANIELS MANUFACTURING CORP. NOT TO BE DISCLOSED TO OTHERS, REPRODUCED OR USED FOR ANY OTHER PURPOSE, EXCEPT AS AUTHORIZED IN WRITING BY DANIELS MANUFACTURING. MUST BE RETURNED TO DANIELS MANUFACTURING CORP. ON COMPLETION OF ORDER OR OTHER PURPOSE FOR WHICH LENT.

DO NOT SCALE DRAWING

DRN. A. MOO-YOUNG	DATE 9-8-97	DMC DANIELS MANUFACTURING CORP. ORLANDO, FLORIDA CAGE 11851		
CHK'D. DE	DATE 9-97			
APP'D.	DATE			
APP'D.	DATE	TITLE POSITIONER ENVELOPE DRAWING (M22520/34-02)		
NOTE: THIS DRAWING IS AN OUTLINE DRAWING OF THE RESPECTIVE DMC PART NUMBER INDICATED. ACTUAL DMC PART NUMBER IS DRAWING NUMBER WITHOUT THE "-ENV" SUFFIX.		WHERE USED:	CAD P/N 39-102-ENV	SHEET 1 OF 1
		POSTING	DWG. NO. 39-102-ENV	REV. 2